

Sant.

Hs.

1616







4012

al. Dottissimo ab^{te} J. Santini l'autore

SANTINISCHE BIBLIOTHEK
Eigentum
des Bischöflichen Stuhles
MÜNSTER



GRADUALE per la B.V. a pieno

di F. Tassari

Cento 1828

Gs 1616

Handwritten musical score for vocal and instrumental parts. The parts are:

- Violini**: Violins, staff 1, treble clef, key signature of two flats (B-flat, E-flat), common time.
- Viola**: Viola, staff 2, alto clef, key signature of two flats, common time.
- Corni in Fa**: Horns in F, staff 3, bass clef, key signature of two flats, common time.
- Tenor 1^o**: Tenor 1, staff 4, alto clef, key signature of two flats, common time.
- Tenor 2^o**: Tenor 2, staff 5, alto clef, key signature of two flats, common time.
- Basso**: Bass, staff 6, bass clef, key signature of two flats, common time.
- all:**: All instruments, staff 7, bass clef, key signature of two flats, common time.

The score includes dynamic markings such as *p.* (piano) and *vill.* (villainous). The notation features various note values, rests, and phrasing slurs.

Handwritten musical score for piano accompaniment, consisting of three staves:

- Right Hand**: Treble clef, featuring complex rhythmic patterns and melodic lines.
- Left Hand**: Bass clef, providing harmonic support with chords and bass lines.

The piano part is written in the same key signature and time signature as the vocal and instrumental parts above. It includes various articulations and dynamic markings.

Handwritten musical score for the first system. It includes vocal lines with lyrics and instrumental accompaniment. The lyrics are: *be-ne-di-c-ta et ve-ne-*

Handwritten musical score for the second system. It includes vocal lines with lyrics and instrumental accompaniment. The lyrics are: *ra-bilis et vir-go ma-ri-a et vir-go ma-ria*

Sol. legato

Handwritten musical score on aged paper, featuring a choir and instrumental parts. The score is organized into systems of staves. The top system includes vocal parts with Latin lyrics: *que sine tactu pu- do-ri in-venta es*. The bottom system includes instrumental parts with lyrics: *mater mater salva- toris*. The notation includes various musical symbols such as clefs, notes, rests, and accidentals. The paper shows signs of age, including some staining and a small tear on the left edge.

que sine ta--cta ta--cta pu--do--rij in--ven--ta y mater es

mater sal--va--torij in--venta y mater salva--to--rij

Tutti

Handwritten musical score for a choir and instruments. The score is written on aged, yellowed paper and consists of two systems of staves. The top system includes vocal parts with lyrics and instrumental accompaniment. The lyrics are: "allelu-ja al-le-lu-ja alle-lu-ja". The bottom system continues the instrumental accompaniment. The notation includes various musical symbols such as clefs, notes, rests, and accidentals. There are also some markings like "o" and "f" at the bottom of the page.

Handwritten musical score for the first system. It consists of two staves. The upper staff contains a vocal line with lyrics: "qui sine ta-ctu ta-ctu pu-er-um in-". The lower staff contains piano accompaniment. The music is written in a historical style with various clefs and accidentals.

Handwritten musical score for the second system. It continues the vocal and piano parts from the first system. The lyrics for the vocal line are: "ven-ta es ma-ter es mater salva-to-ri-um et mater salva-to-ri-um". The piano accompaniment continues with various chords and melodic lines.

CHE BIBLIOTHECA
 Eigentum
 des Bischöflichen Stuhles
 MÜNSTER

Soli

cresc

Handwritten musical score for a choral piece, featuring multiple staves with vocal lines and instrumental accompaniment. The lyrics "alleluia" are written across several staves. The score includes various musical notations such as clefs, notes, rests, and dynamic markings like "Tutti".

Tutti

alle-lu--ja alle-lu--ja alle-lu--ja

alle-lu--ja alle-lu--ja alle-lu--ja

alle-lu--ja

alle-lu--ja

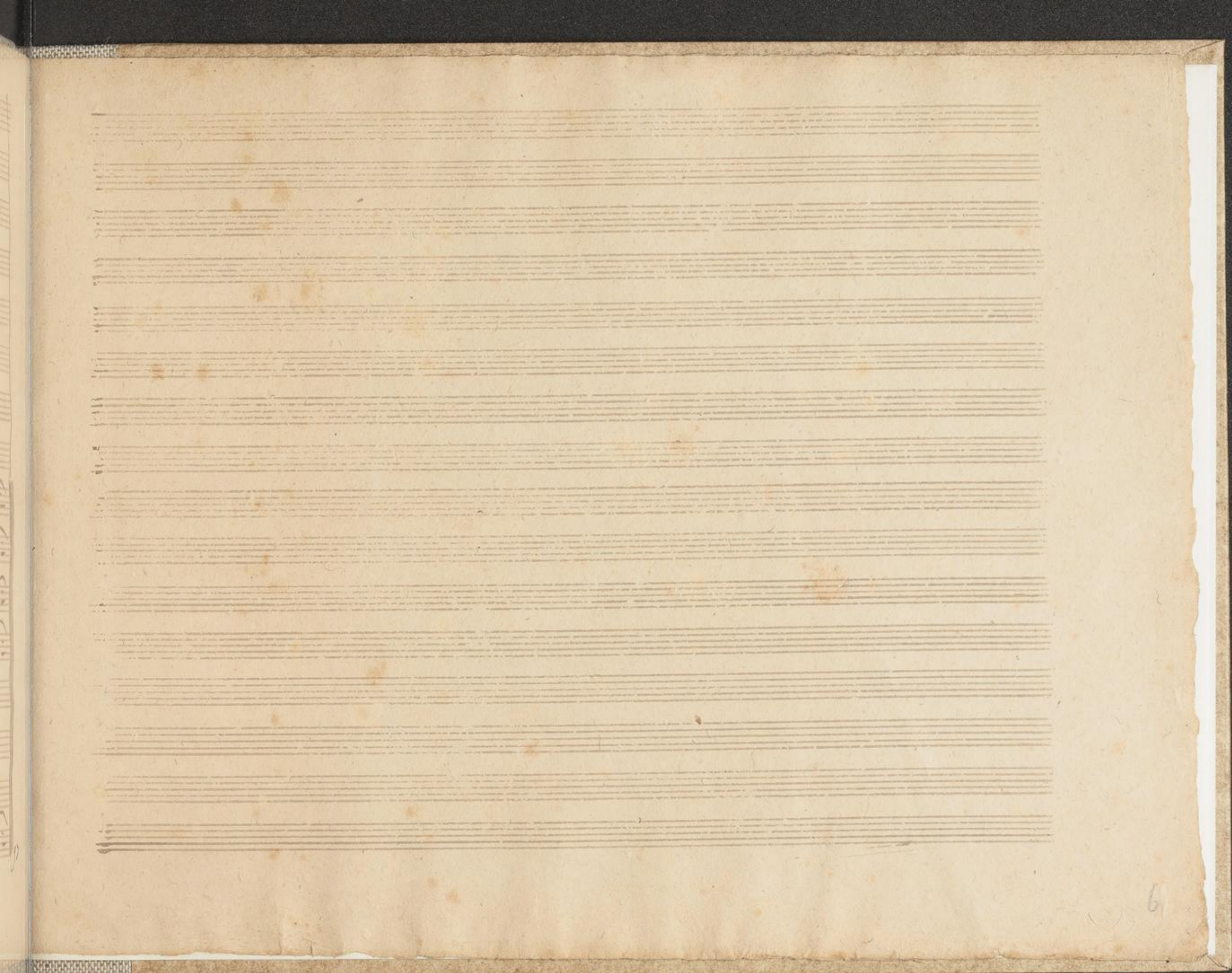
alle-lu--ja al-le-lu--

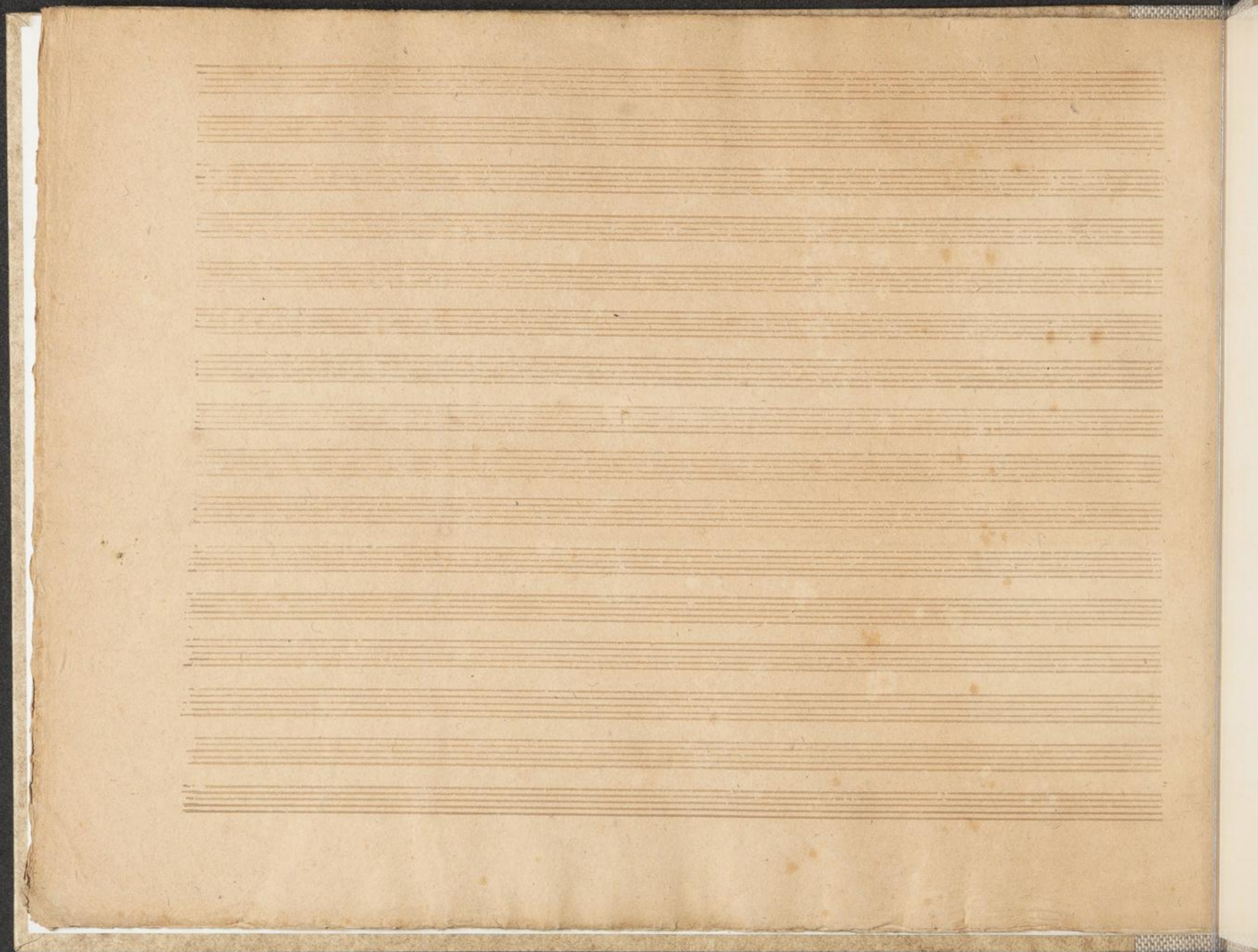
al-le-lu--ja al-le-lu--

Handwritten musical score for the first system, featuring vocal lines and piano accompaniment. The lyrics are: "ja alle-lu-ja alle-lu-ja alle-lu-ja". The score includes treble and bass clefs, a key signature of one sharp (F#), and a common time signature (C). The piano part consists of multiple staves with complex rhythmic patterns and chords.

Handwritten musical score for the second system, continuing the vocal and piano parts. The lyrics are: "ja alle-lu-ja al-le-lu-ja al-le-lu-ja". The score includes treble and bass clefs, a key signature of one sharp (F#), and a common time signature (C). The piano part continues with complex rhythmic patterns and chords.

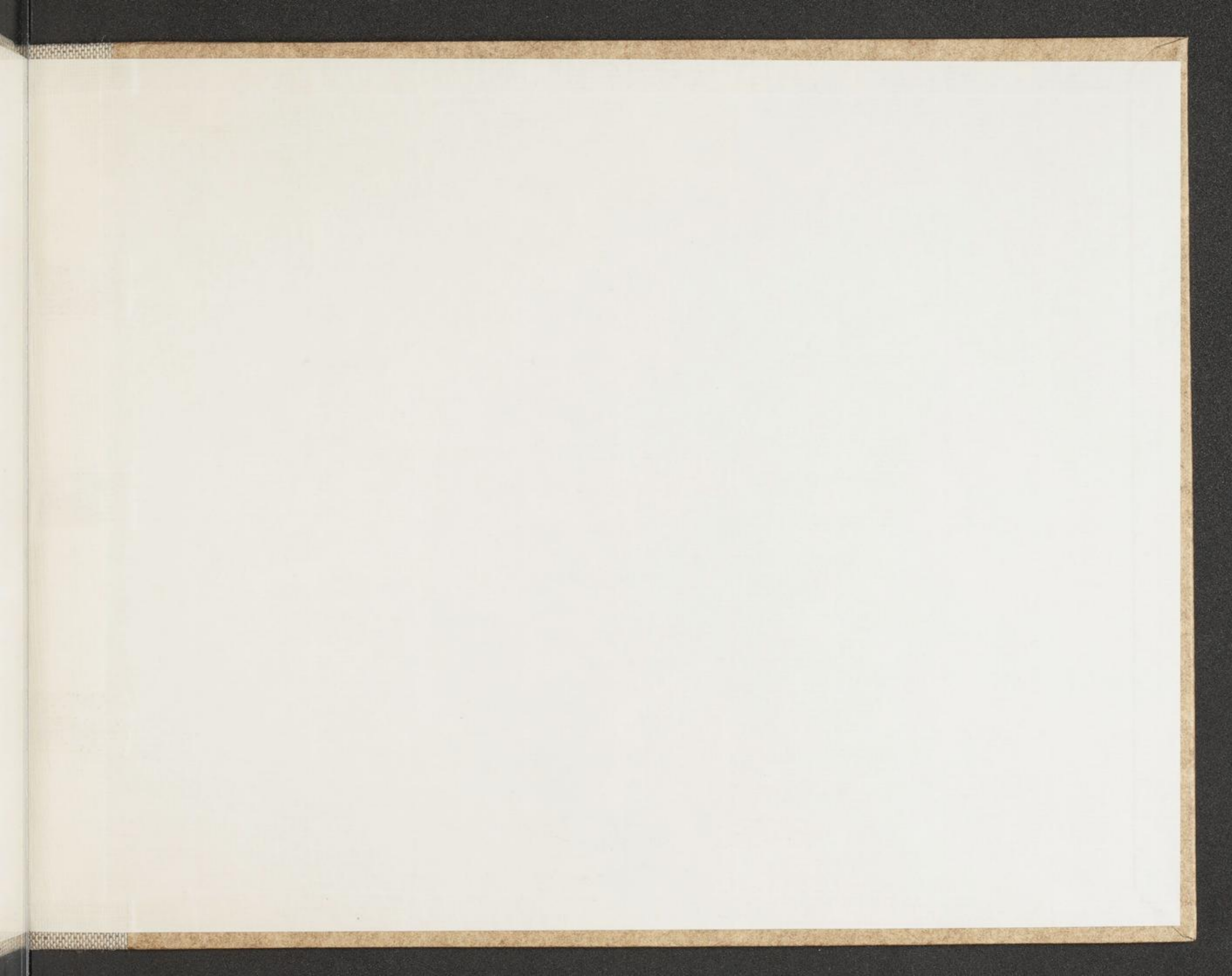
Handwritten musical score on aged paper, featuring multiple staves and lyrics. The score is organized into six measures across the top section. The first measure includes the lyrics "ja" and "ja". The notation includes various musical symbols such as notes, rests, and accidentals. The bottom section of the page contains additional musical notation, including a double bar line and a final measure with a double bar line and a fermata-like symbol.

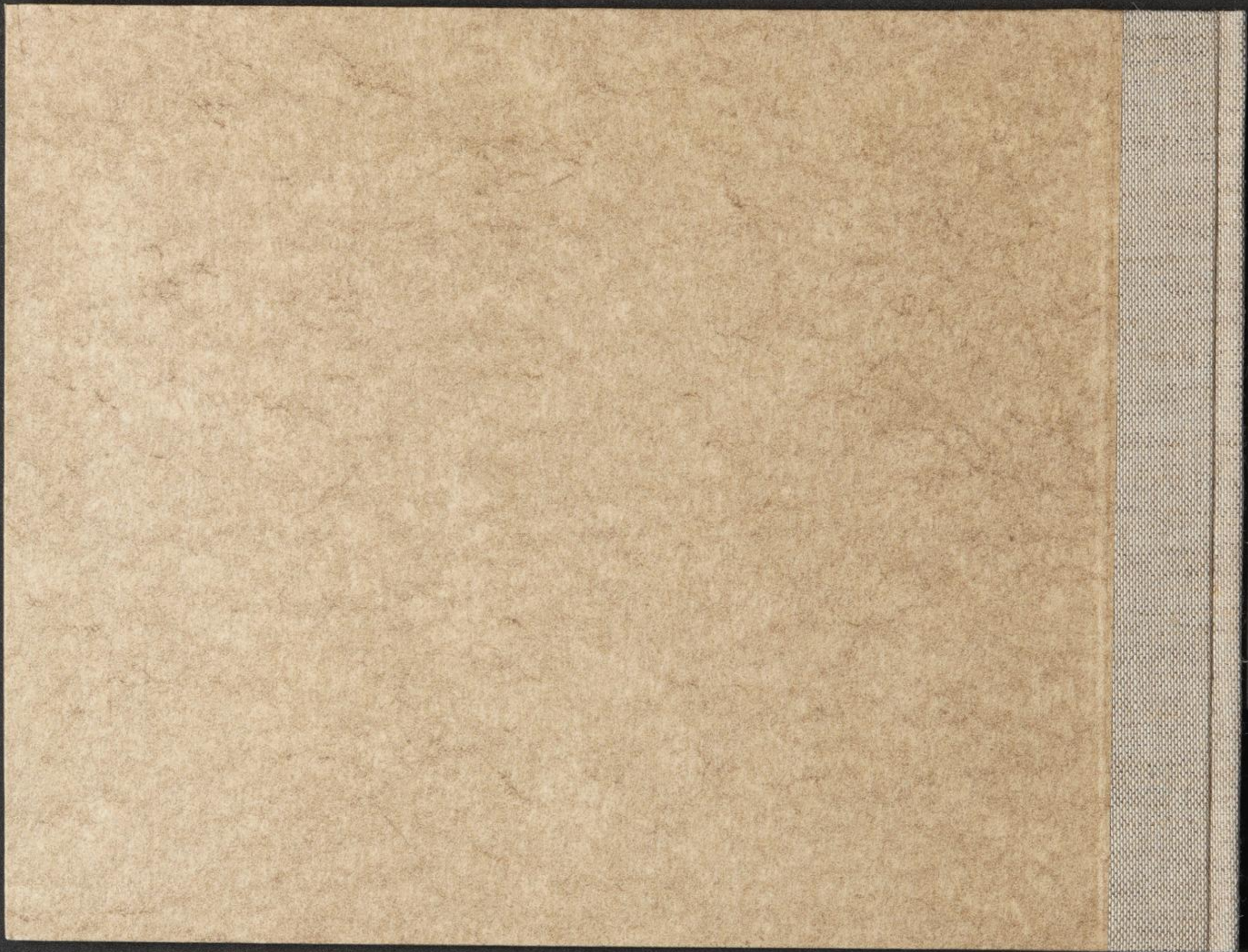












402

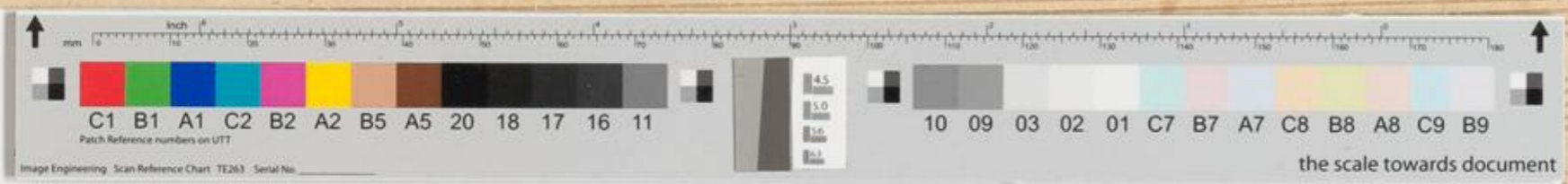
Al. Dottissimo ab. J. Santini l'autore

SANTINISCHE BIBLIOTHEK
Eigentum
des Bischöflichen Stuhles
MÜNSTER



GRADUALE per la B.V. a pieno

Di J. Jaffari



 **DIÖZESANBIBLIOTHEK
MÜNSTER**
KATHOLISCHE KIRCHE
BISTUM MÜNSTER

In Kooperation mit dem
Institut für Musikwissenschaft
der WWU Münster



Cento 1828